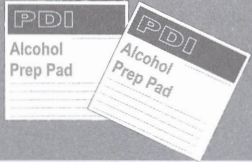


- 1 pc. 78 x 150 mm patch
- 1 pc. 36 x 36 mm patch
- 1 pc. 23 x 23 mm patch



- 1 pc. Reinforcement filament



- 2 pc. Alcohol prep. pads

See-through patch

For any colour of material

Adhesive

On all textures

Suitable

for use in all temperatures

UV resistant

material

Cuts easily

with scissors

Firm and Air tight

even when tensioned

TEMPERATURE:

Approximate Range:
TYPE B: -30°C TO 85°C

The TEAR-AID repair patch B is made from an exceptionally tough, matte finish, abrasion resistant, polyurethane elastomer that resists puncture and tearing. It is combined with an aggressive adhesive formulated for high strength bond to a variety of surfaces such as vinyl and vinyl coated material. Patch B provides a simple and easy method of patching holes and tears as well as an excellent protective film.



Repair holes & tears instantly

Vinyl only

(PVC Roofs - Awning Windows - Awning lower Panels)

See through patch

TYPE B

TEAR-AID™ Patch

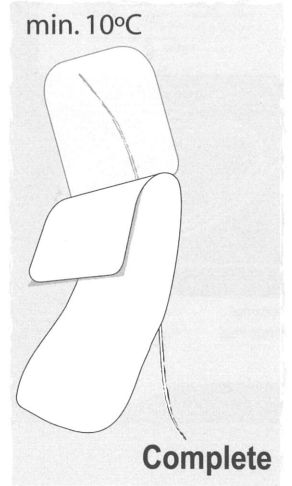
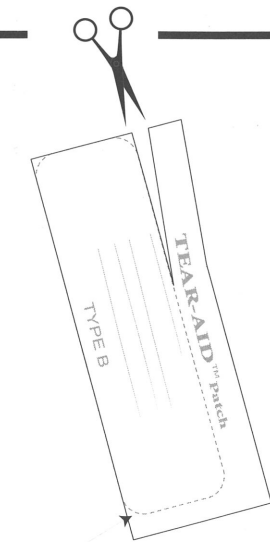
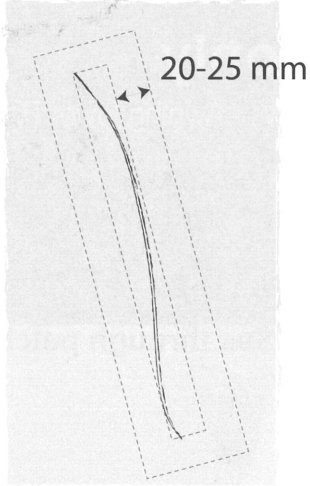
Repair set

Isabella

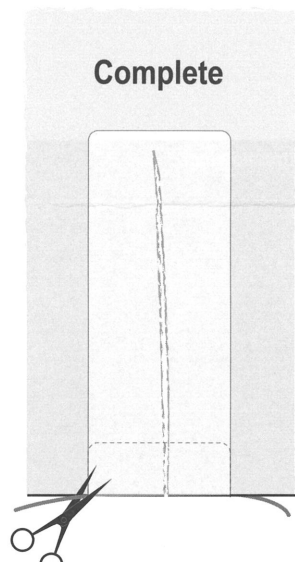
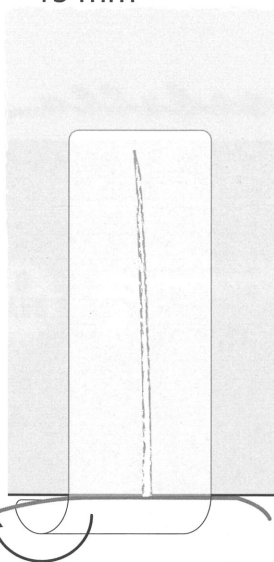
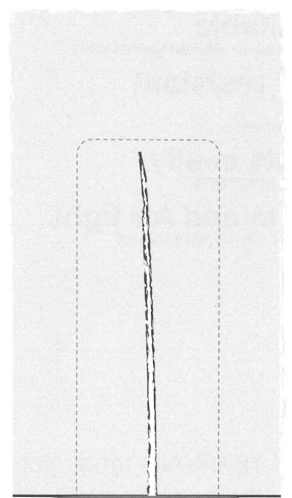
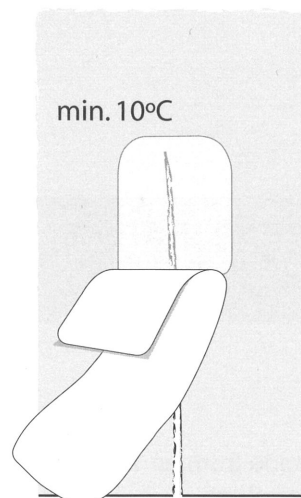
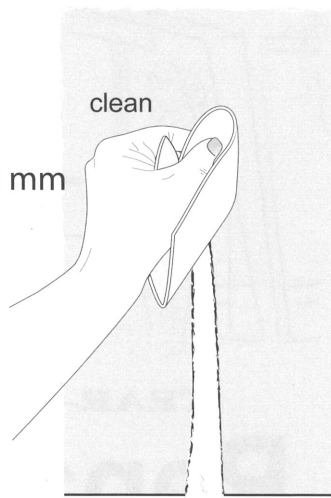
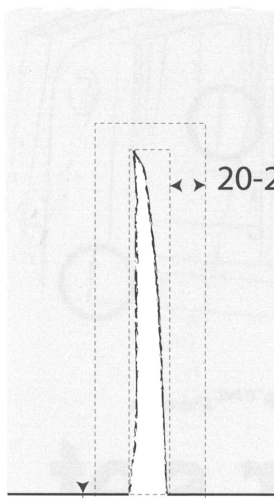
Instruction incl.



Instruction 1



Instruction 2




Isabella[®]
TEAR-AID™ Patch